

Ruby's Signalong Adventures
Red





Introducing Ruby, the Signalong Staff Therapy Dog.

COPYRIGHT: SIGNALONG

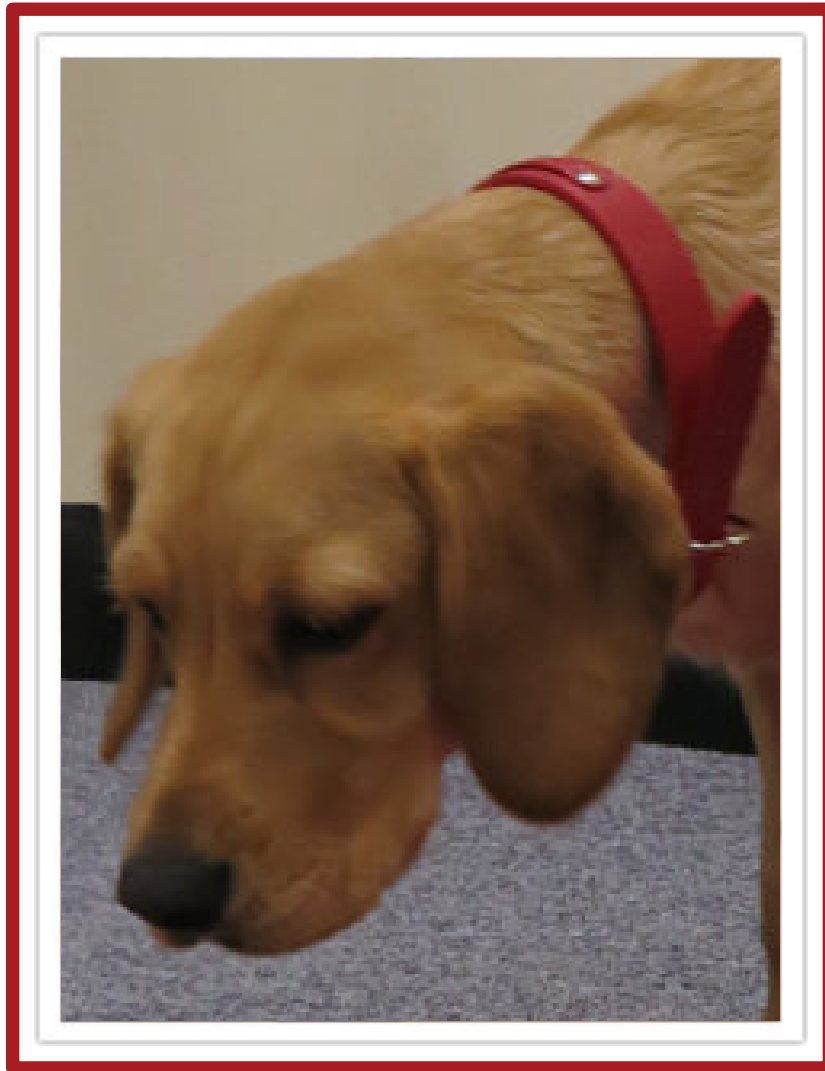
This publication is excluded from Copyright Licensing Agency agreements

Copyright in SIGNALONG publications is held by SIGNALONG The Communication Charity. No copying, scanning, reproducing, photographing, uploading to websites or posting on social media is permitted of any publication without the express prior permission of the publisher in writing or by email. Wider circulation is by prior express permission by letter or email only. Under no circumstances whatsoever may any SIGNALONG diagrams, graphics, descriptions or other text be incorporated in any product offered for sale or a consideration anywhere in the world except under a licence previously issued by the charity. SIGNALONG will seek full compensation for any breach of this condition and all costs associated with such a breach. Copyright in some electronic media offered by the charity is held by the publishers of those media. The name "SIGNALONG" is the registered trademark of SIGNALONG The Communication Charity, 1 Old Winery Business Park, Cawston, Norwich, Norfolk, NR10 4FE (registered charity no. 1039788).





Hello, my name is **Ruby**.



I have a **red** collar.



I sleep on a **red** blanket



I have lots of **red** toys.



I have a **red** ball.



I have a **red** train.



I have **red** sausages.



I have a **red** nose too, do you?



I like the colour red.

RUBY



Make letter shape "R"; then working bunched hand on third finger of supporting hand springs up turning to open hand (palm back, pointing up).

COLLAR



"C" hands (palms in, pointing back) at base of neck make small movement to meet in front of neck.

BLANKET



Fists at working shoulder mime pulling blanket over shoulder while snuggling.

TOYS



Make letter shape "T"; formation circles out to supporting side once.

BALL



Flat hands (palms down, pointing forward) move round to show shape of ball, finishing palms up.
Size of circle shows relative size of ball.

TRAIN



Working closed hand (palm in, pointing forward) moves in small forward circles.

SAUSAGES



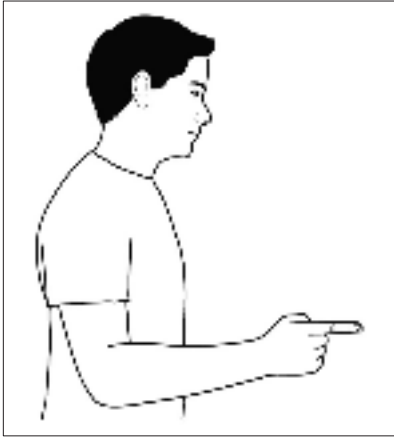
Loosely bunched hands (palms in/down, pointing in/up) open and close as they move apart. Continue movements to show string of sausages.

NOSE



Working index (palm back, pointing in/up) indicates length of nose on supporting flat hand (palm forward, pointing up).

YOU



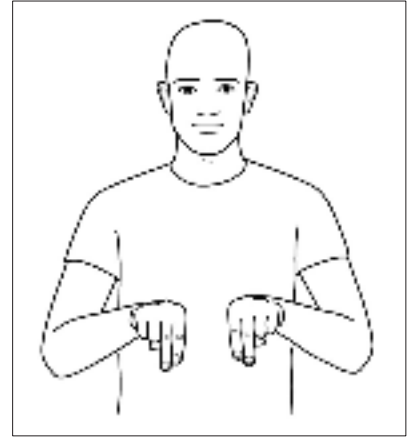
Working index hand (palm in, pointing forward) indicates person.
Directional sign.

RED



Working index hand (palm back, pointing up) flicks forward off bottom lip changing to "r" hand.

DOG



Bent "N" hands (palms down, pointing forward)