

Ruby's Signalong Adventures
Happy Birthday!



Introducing Ruby, the Signalong Staff Therapy Dog.

COPYRIGHT: SIGNALONG

This publication is excluded from Copyright Licensing Agency agreements

Copyright in SIGNALONG publications is held by SIGNALONG The Communication Charity. No copying, scanning, reproducing, photographing, uploading to websites or posting on social media is permitted of any publication without the express prior permission of the publisher in writing or by email. Wider circulation is by prior express permission by letter or email only. Under no circumstances whatsoever may any SIGNALONG diagrams, graphics, descriptions or other text be incorporated in any product offered for sale or a consideration anywhere in the world except under a licence previously issued by the charity. SIGNALONG will seek full compensation for any breach of this condition and all costs associated with such a breach. Copyright in some electronic media offered by the charity is held by the publishers of those media. The name "SIGNALONG" is the registered trademark of SIGNALONG The Communication Charity, 1 Old Winery Business Park, Cawston, Norwich, Norfolk, NR10 4FE (registered charity no. 1039788).





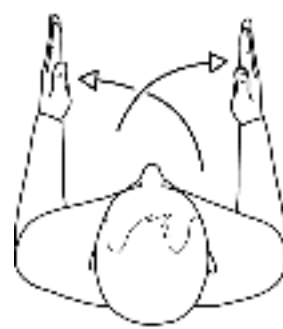
Hello, my name is **Ruby**.



It's my birthday.



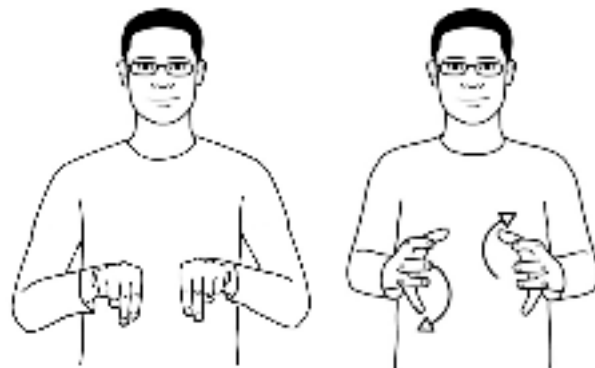
I am 3 years old.



I have lots of presents.



I have a ball.



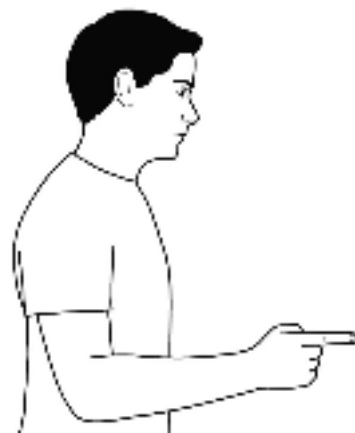
I have a dog bone.



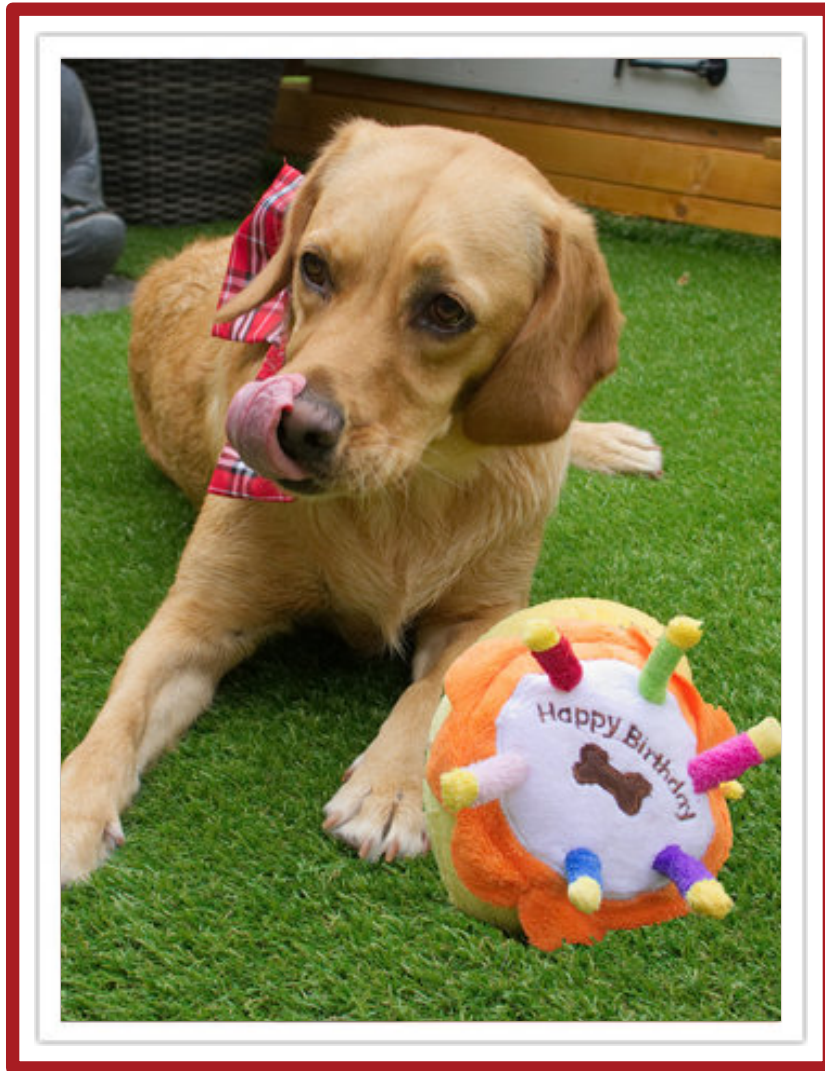
I have a teddy bear.



I have a birthday cake too.



I like cake do you?



I had a happy birthday.

RUBY



Make letter shape "R"; then working bunched hand on third finger of supporting hand springs up turning to open hand (palm back, pointing up).

MY



Working open hand closes into fist while moving back to contact chest.

BIRTHDAY



Flat hands (palms up, pointing forward) just below waist make small movement forwards/up; then flat hands (palms back, pointing in/up), in front of face, move out in small arc.

I



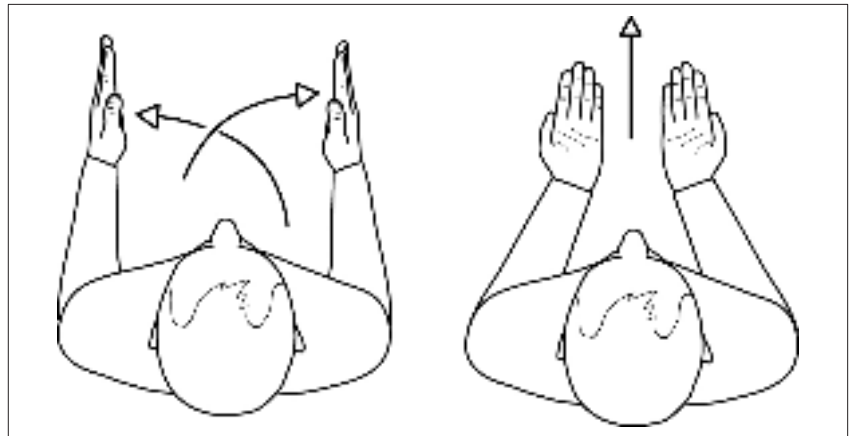
Working index hand points to chest.

THREE



Working hand with index, middle and third fingers extended (palm back, pointing up) held in front of body.

PRESENTS



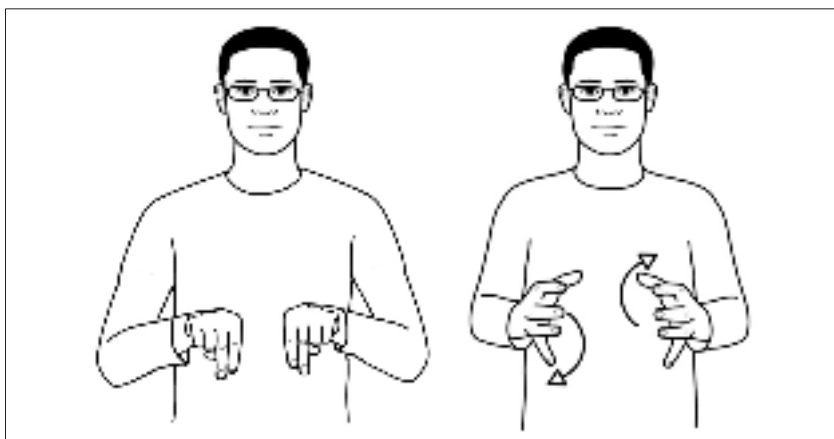
Flat hands (palms back, pointing in) working hand in front, move to palms in, pointing forward, showing shape and size of box; then flat hands move around "box" to palms up, pointing forward, and move forwards as though giving.

BALL



Flat hands (palms down, pointing forward) move round to show shape of ball, finishing palms up.

DOG BONE



Bent "N" hands (palms down, pointing forward) are held in front of body; then loosely clawed hands (palms in, pointing forward) each make a half-turn in opposite directions.

Diagrams, text & descriptions © SIGNALONG

TEDDY BEAR



Crossed arms, working arm in front, hands at opposite shoulders, mime cuddling soft toy.

BIRTHDAY CAKE



Flat hands (palms back, pointing in/up), in front of face, move out in small arc; then working clawed hand (palm down, pointing forward) rests on the back of supporting flat hand (palm down, pointing in).

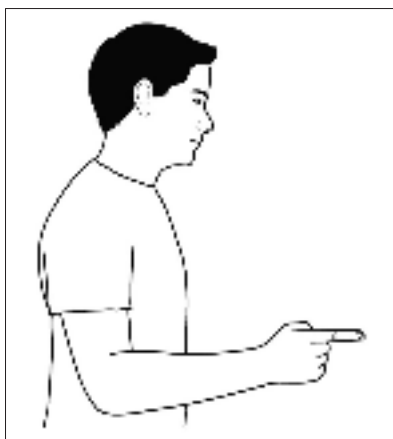
Diagrams, text & descriptions © SIGNALONG

CAKE



Working clawed hand (palm down, pointing forward) rests on the back of supporting flat hand (palm down, pointing in).

YOU



Working index hand (palm in, pointing forward) indicates person.
Directional sign.

Diagrams, text & descriptions © SIGNALONG

HAPPY BIRTHDAY

Diagrams, text & descriptions © SIGNALALONG



Working cupped hand strikes twice across supporting palm moving towards heel of hand; then flat hands (palms up, pointing forward) just below waist make small movement forwards/up; then flat hands (palms back, pointing in/up), in front of face, move out in small arc.