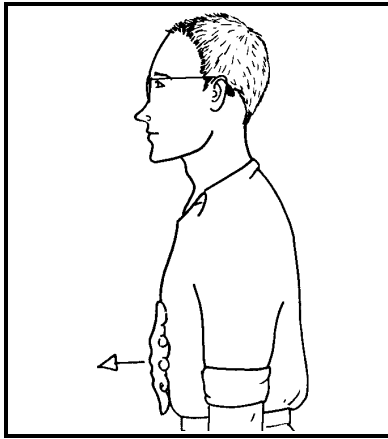
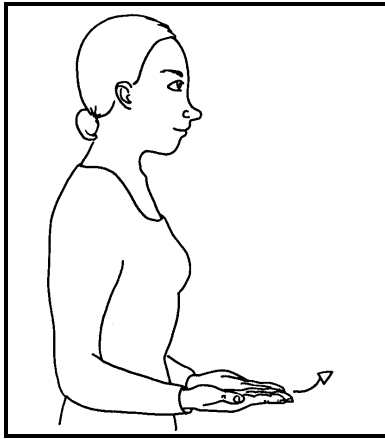


PREGNANT



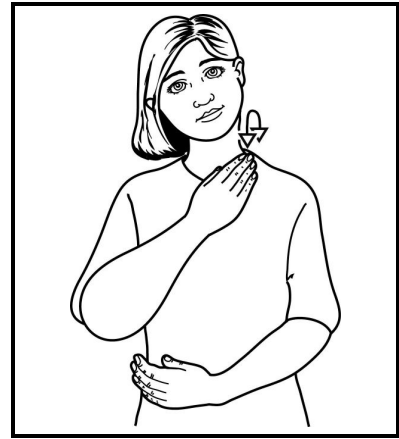
Working open hand (palm back, pointing in) against lower chest moves forwards.

GIVE BIRTH



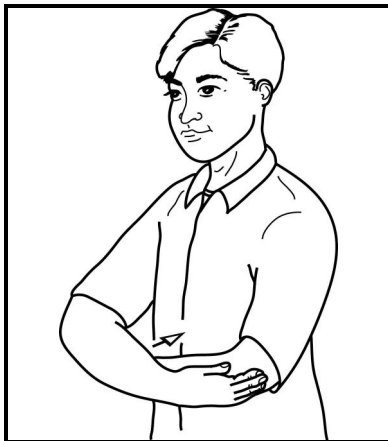
Flat hands (palms up, pointing in) held apart with little fingers against waist; hands move forward/in.

BABY



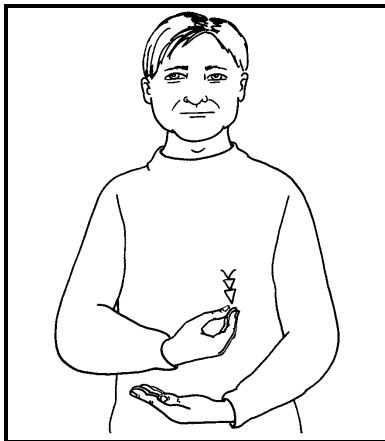
Supporting arm across body mimes holding baby as working hand mimes patting a baby's back at supporting shoulder.

CUDDLE



Rounded arms, working arm in front, squeeze back to body, shoulders lift.
Do not contact body.

BREASTFEED



Working loosely bunched hand (palm up, pointing in) makes short downward movement twice closing to bunched hand as supporting arm mimes holding baby.

HAPPY



Working cupped hand strikes twice across supporting palm moving towards heel of hand.

©SIGNALONG



The Signalong Group
Stratford House Waterside Court
Rochester Kent ME2 4NZ

0845 450 8422

www.signalong.org.uk

Communication skills for children and adults with
speech, language and communication needs

Signing resources
Visual communication resources
Training
Advice