

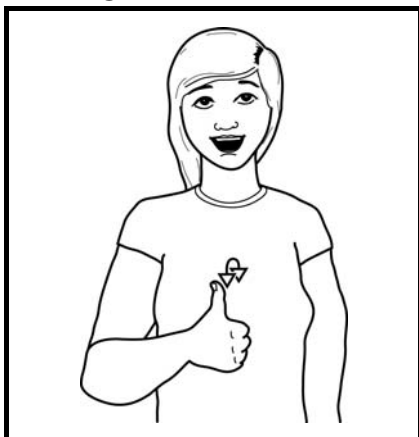


www.hello.org.uk

January : Don't take communication for granted

Signalong supports the National Year of Communication and will be offering free sheets of signs each month, relevant to the monthly theme. Signing helps children who have difficulty in understanding by providing a visual clue to what is said. Children who have difficulty with speaking or finding words can be helped if they know the sign. This can relieve stress and anxiety, often helping them to overcome a psychological barrier to speech.

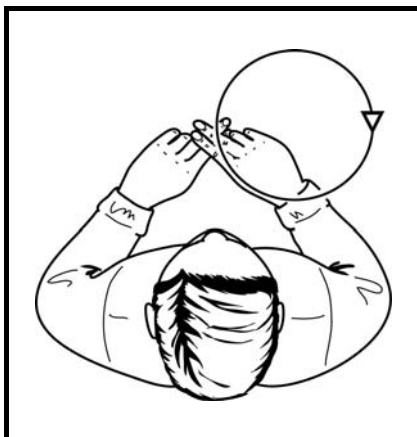
HELLO



Working thumb hand (palm back, pointing in) held up in front of body, twists backwards and forwards at wrist.

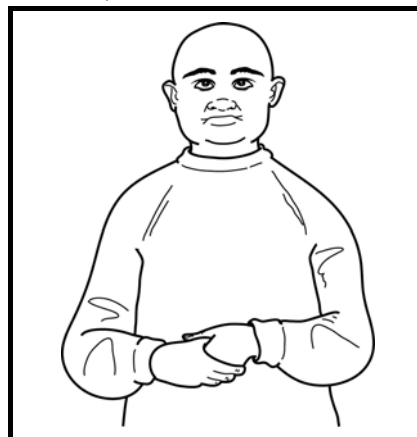
Directional sign.

FAMILY



Working "N" hand rests on supporting "N" hand (palms down, pointing forward/in); formation circles out to working side.

FRIEND



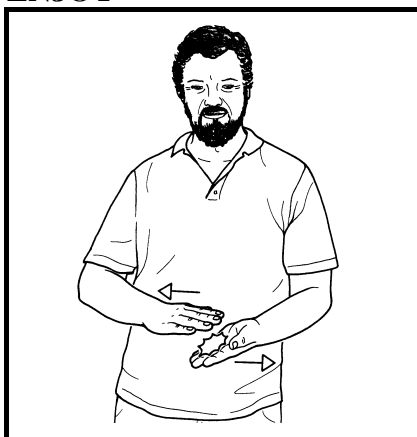
Working hand (palm back, pointing in/down) clasps supporting hand (palm back, pointing in/down).

COMMUNICATE



"C" hands (palms in, pointing up) move backwards and forwards alternately several times. May be signed from chest height or at chin height as appropriate.

ENJOY



Working flat hand (palm down, pointing forward/in); supporting flat hand (palm up, pointing forward/in) below. Hands move out so that palms brush together. Repeat.

LIFE



Working open hand (palm back, pointing in), middle finger extended, makes small forward circles as finger brushes against upper chest.

©SIGNALONG



The Signalong Group
Stratford House Waterside Court
Rochester Kent ME2 4NZ
0845 450 8422
www.signalong.org.uk

Communication skills for children and adults with
speech, language and communication needs

Signing resources / Visual communication resources / Training / Advice