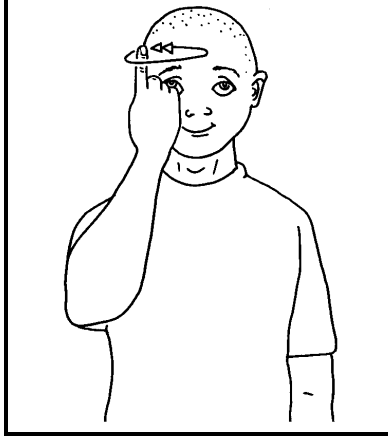




## Imagine life for those that struggle

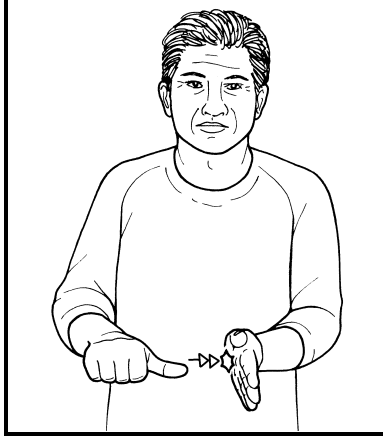
Signalong supports the National Year of Communication and is offering free sheets of signs each month, relevant to the monthly theme. Children who find communication hard, find life hard. Over 1 million children in the UK struggle to communicate, which can lead to failure in school and social exclusion. Helping them to overcome their difficulties enables them to participate and to achieve their full potential.

### IMAGINE



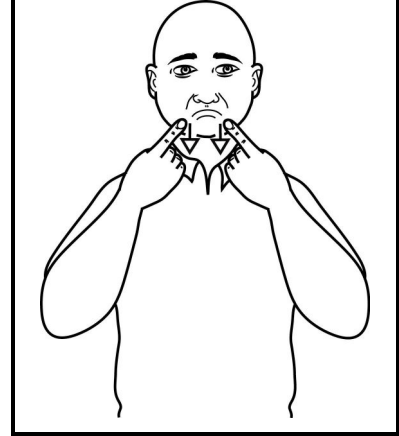
Working index hand (palm back, pointing up) makes slow inward circles in front of forehead.

### DIFFICULT



Working thumb hand (palm down, pointing forward) taps supporting flat hand (palm in, pointing forward) twice.

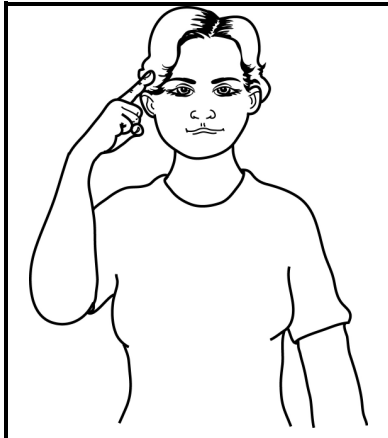
### UNHAPPY



Index hands (palms back, pointing in/up) at sides of lips make a short downward movement.

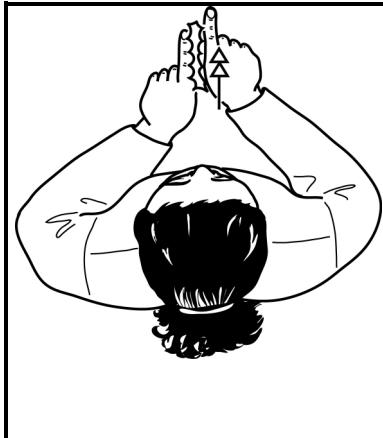
©SIGNALONG

### THINK



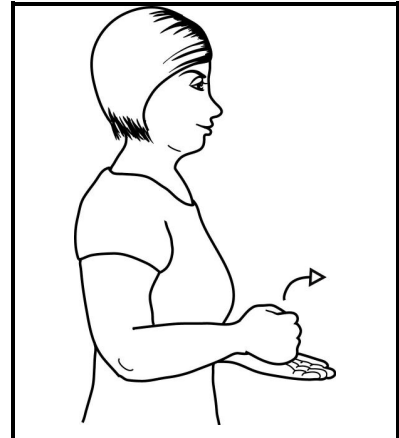
Working index hand points to side of temple.

### TRY



Index hands (palms down, pointing forward), supporting hand slightly in front; working hand moves forwards twice, indexes brushing.

### HELP



Blade of working fist rests on supporting palm; formation moves up/forwards.

©SIGNALONG



**The Signalong Group**  
**Stratford House Waterside Court**  
**Rochester Kent ME2 4NZ**

0845 450 8422

[www.signalong.org.uk](http://www.signalong.org.uk)

Communication skills for children and adults with  
speech, language and communication needs

Signing resources / Visual communication resources / Training / Advice



## Imagine life for those who struggle

Children with communication difficulties tend to struggle in all areas of life – play, school, relationships, hobbies and games even. Later on they are likely to have problems finding work and may run into trouble with the law. The earlier action is taken the better – falling behind in the early years makes it more difficult to catch up, but it's never too late to try to help. When children do have these problems, it's important to be able to respond in the right way. Signing is a quick and relatively easy way of making contact with someone face-to-face, and you need a way of finding the right signs to use.

Signalong is made accessible by its approach to how the signs are formed, analysing them for handshape, orientation, placement and movement, supporting the descriptions with clear line drawings. This method enables parents and practitioners to produce accurate signs relevant to their situation, taken from the largest range in the UK of illustrated signs taken from British Sign Language.

The Signalong Group is a charity (no 1039788) which provides resources, training and free advice, and readily works with others in the field to promote communication skills for children and adults with speech, language and communication needs.

**Hello**, the 2011 national year of communication, is a campaign to increase understanding of how important it is for children and young people to develop good communication skills. In the 21st century, the ability to communicate - to say what you want to say and to understand what other people are saying - is fundamental. For more information about **Hello**, please go to [www.hello.org.uk](http://www.hello.org.uk).

The campaign is being run by the Communication Trust, an umbrella charity which brings together voluntary sector organisations concerned with children's speech, language and communication needs. The purpose of the Trust is to raise awareness of the importance of speech, language and communication across the children's workforce and enable practitioners to access the best training and expertise to support all children's communication needs. Signalong has been part of the Communication Trust since 2007. For more information about the Trust, please go to [www.thecommunicationtrust.org.uk](http://www.thecommunicationtrust.org.uk).

<http://www.signalong.org.uk/>

<http://www.hello.org.uk/>

<http://www.thecommunicationtrust.org.uk/>