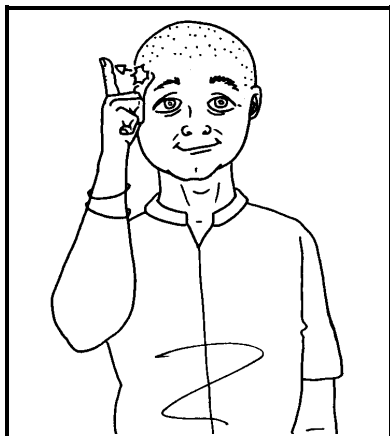




October: Not Just Words

Some children have little or no speech. They use facial expressions, real objects, objects of reference, pictures, signing, symbols or computer aids to communicate with others. Some of these are specific to individual users, such as voice-output devices, other lower-technology methods such as using pictures or signing have a broader application.

TO UNDERSTAND



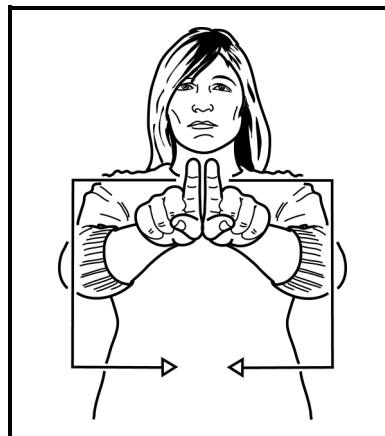
Working closed pinched hand (palm in, pointing up) at side of forehead; index finger flicks up.

OBJECT / THING



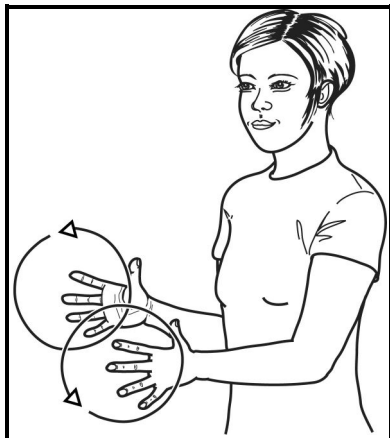
Index hands (palms back, pointing up) move together; blades tap twice.

PICTURE



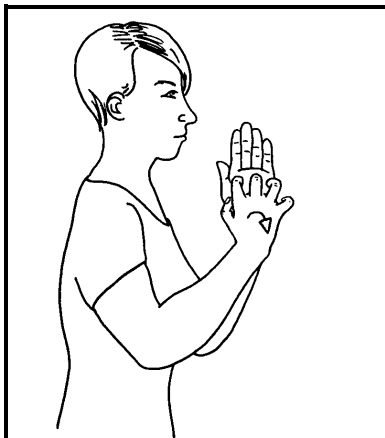
Index hands side by side (palms forward/down, pointing forward/up) trace around the shape of picture frame.

TO SIGN



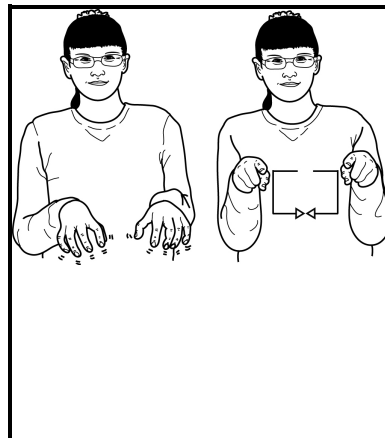
Open hands (palms in pointing forward) move in alternate forward circles.

SYMBOL



Working clawed hand (palm in, pointing up) twists to point forward on palm of supporting flat hand (palm in, pointing up).

COMPUTER



Clawed hands (palms down, pointing forward) mime typing; then index hands (palms down, pointing forward) outline small screen.

©SIGNALONG



The Signalong Group
Stratford House Waterside Court
Rochester Kent ME2 4NZ
0845 450 8422
www.signalong.org.uk

Communication skills for children and adults with
speech, language and communication needs

Signing resources / Visual communication resources / Training / Advice



Not just words

Good communicators will always use visual methods – pictures, videos etc – to illustrate the content of their lessons, and this can be taken further by associating signs with key ideas. Signing is the formalisation of a natural instinct to gesture as we speak. The speaker becomes more expressive and children who have difficulty processing words will have visual clues to help them. Children with word-finding difficulties will often be able to remember a sign when a word eludes them.

Signalong is made accessible by its approach to how the signs are formed, analysing them for handshape, orientation, placement and movement, supporting the descriptions with clear line drawings. This methodology enables parents and practitioners to produce accurate signs taken from British Sign Language which are relevant to their situation. Signalong has resources to support the curriculum and also "Going To School", a handbook of signs about the school environment and curriculum subjects.

The Signalong Group is a charity (no 1039788) which provides resources, training and free advice, and readily works with others in the field to promote communication skills for children and adults with speech, language and communication needs.

Hello, the 2011 national year of communication, is a campaign to increase understanding of how important it is for children and young people to develop good communication skills. In the 21st century, the ability to communicate - to say what you want to say and to understand what other people are saying - is fundamental. For more information about **Hello**, please go to www.hello.org.uk.

The campaign is being run by the Communication Trust, an umbrella charity which brings together voluntary sector organisations concerned with children's speech, language and communication needs. The purpose of the Trust is to raise awareness of the importance of speech, language and communication across the children's workforce and enable practitioners to access the best training and expertise to support all children's communication needs. Signalong has been part of the Communication Trust since 2007. For more information about the Trust, please go to www.thecommunicationtrust.org.uk.

<http://www.signalong.org.uk/>

<http://www.hello.org.uk/>

<http://www.thecommunicationtrust.org.uk/>

**Signalong is a registered charity (no 1039788)
working for improved communication since 1992**