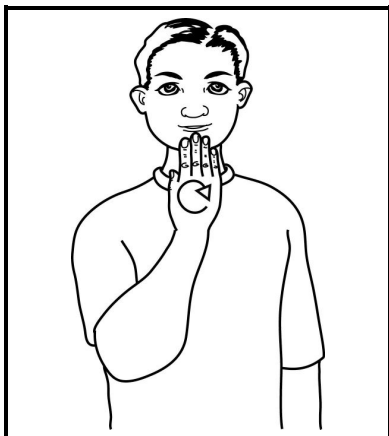


## September: Back To School



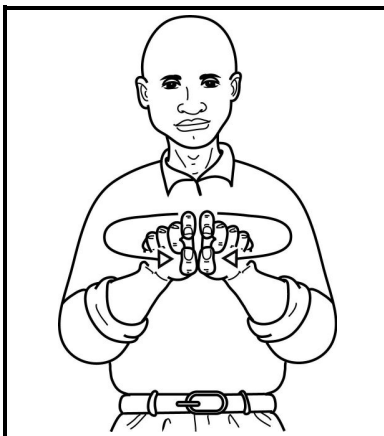
Speech and language skills are vital in the classroom. Language is the way that teachers teach and children learn. Some children struggle to understand words, and signing the key elements of sentences helps teachers get the message across. We are all visual learners, and supporting the spoken and written word with the visual clues provided by signs can help all children to grasp new concepts

### SCHOOL



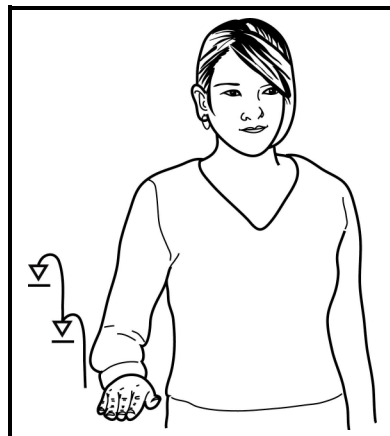
Working flat hand (palm back, pointing up) makes vertical inward circle in front of chin. Do not conceal mouth.

### CLASS



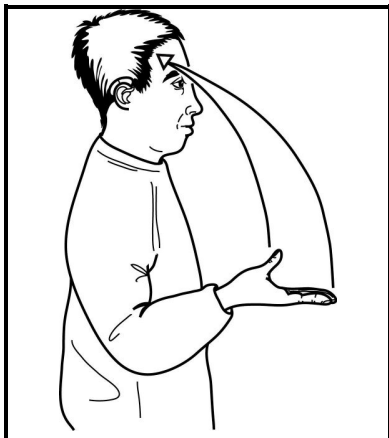
"C" hands (palms forward, pointing up) indexes and thumbs touching, circle in to palms back with blades touching.

### CHILDREN



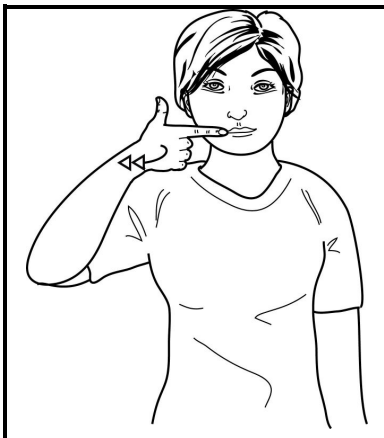
Working flat hand (palm down, pointing forward) at side of body, steps up to indicate heads of children.

### LEARN



Working parallel flat hand with (palm up, pointing forward) moves to working side of forehead closing to bunched hand (palm back, pointing up).

### LANGUAGE



Working "L" hand (palm back, pointing in) beside mouth bends at wrist to point forwards several times.

### TEACHER



Index hands (palms in, pointing up) at each side of mouth, move forward/out in two movements.

©SIGNALONG



**The Signalong Group**  
**Stratford House Waterside Court**  
**Rochester Kent ME2 4NZ**  
0845 450 8422  
[www.signalong.org.uk](http://www.signalong.org.uk)

Communication skills for children and adults with  
speech, language and communication needs

Signing resources / Visual communication resources / Training / Advice



## Back to school

Children with speech, language and communication difficulties will struggle to keep up with their peers if teachers just use words to get their message across. Good teachers will always use visual methods – pictures, videos etc – to illustrate the content of their lessons, and this can be taken further by associating signs with key ideas. The teacher becomes more expressive and children who have difficulty processing words will have visual clues to help them.

Signalong is made accessible by its approach to how the signs are formed, analysing them for handshape, orientation, placement and movement, supporting the descriptions with clear line drawings. This methodology enables parents and practitioners to produce accurate signs taken from British Sign Language which are relevant to their situation. Signalong has resources to support the curriculum and also "Going To School", a handbook of signs about the school environment and curriculum subjects.

The Signalong Group is a charity (no 1039788) which provides resources, training and free advice, and readily works with others in the field to promote communication skills for children and adults with speech, language and communication needs.

**Hello**, the 2011 national year of communication, is a campaign to increase understanding of how important it is for children and young people to develop good communication skills. In the 21st century, the ability to communicate - to say what you want to say and to understand what other people are saying - is fundamental. For more information about **Hello**, please go to [www.hello.org.uk](http://www.hello.org.uk).

The campaign is being run by the Communication Trust, an umbrella charity which brings together voluntary sector organisations concerned with children's speech, language and communication needs. The purpose of the Trust is to raise awareness of the importance of speech, language and communication across the children's workforce and enable practitioners to access the best training and expertise to support all children's communication needs. Signalong has been part of the Communication Trust since 2007. For more information about the Trust, please go to [www.thecommunicationtrust.org.uk](http://www.thecommunicationtrust.org.uk).

<http://www.signalong.org.uk/>

<http://www.hello.org.uk/>

<http://www.thecommunicationtrust.org.uk/>

**Signalong is a registered charity (no 1039788)  
working for improved communication since 1992**