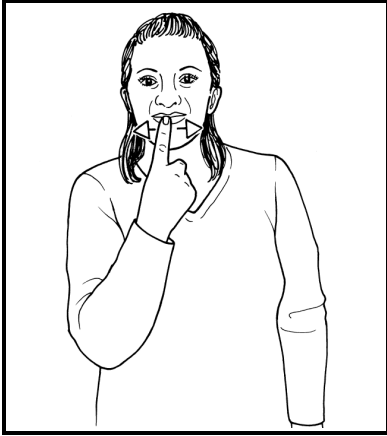
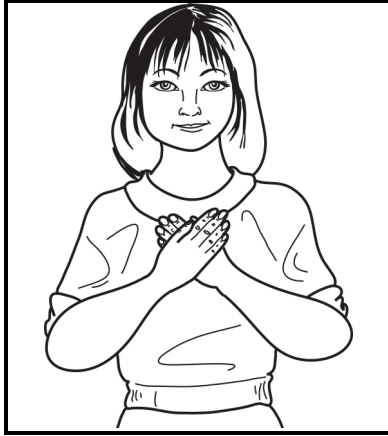


### LIPSTICK



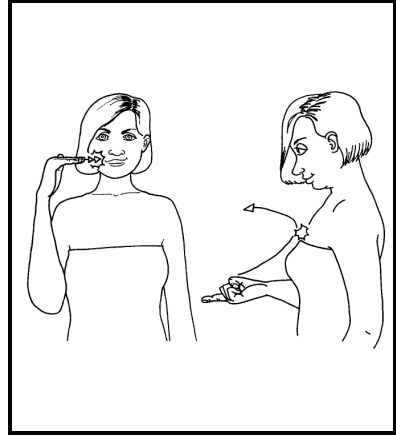
Working index hand (palm back, pointing up) at centre of lips makes small outward movement to each side.

### LOVE



Cross flat hands over chest, working hand in front.

### TO FLIRT



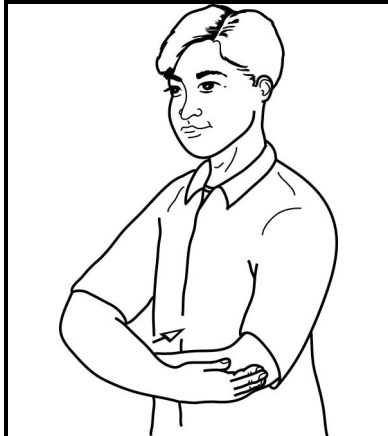
Working bent hand (palm in, pointing up) taps against cheek twice; then working index hand (palm up, pointing forward) moves up/back to brush against chest and away to palm back, pointing up.

### TO FLUTTER EYELASHES



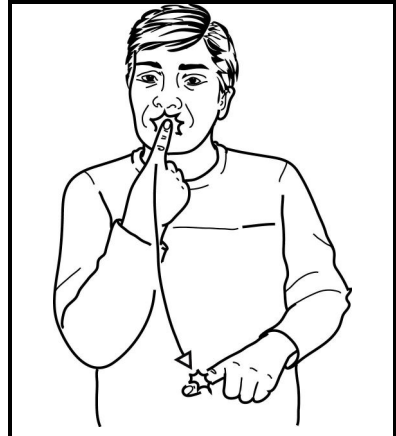
"O" hands (palm in, pointing up) by sides of eyes, fingers "flutter".

### TO CUDDLE



Rounded arms, working arm in front, squeeze back to body, shoulders lift. Do not contact body.

### TO KISS



Tip of working index finger touches lips, moves down and turns to palm down resting across supporting index finger (palm down) to make letter shape "X".

©SIGNALONG



**The Signalong Group**  
**Stratford House Waterside Court**  
**Rochester Kent ME2 4NZ**

0845 450 8422

[www.signalong.org.uk](http://www.signalong.org.uk)

Communication skills for children and adults with  
speech, language and communication needs

Signing resources  
Visual communication resources  
Training  
Advice

# Getting together

Forming relationships can be difficult if you don't have the right words to tell the other person how you feel. And if you don't understand the body language or the words, you may need some additional support. Valentine's Day can be a source of fun, comfort, surprise and sadly, sometimes disappointment.

Signing is a simple way of reinforcing a verbal message, and in most cases there is a visual connection between the sign and the concept being conveyed. By using signs consistently a link can be established with the words and the whole communication process becomes easier (although we can't guarantee that getting up is any easier!)

Signalong has the largest illustrated sign vocabulary in Britain, adapted from British Sign Language for the needs and abilities of children and adults with speech, language and communication needs.

Signalong is made accessible by its approach to how the signs are formed, analysing them for handshape, orientation, placement and movement, supporting the descriptions with clear line drawings. This method enables families and practitioners to produce accurate signs relevant to their situation. Special vocabularies can be compiled on request.

The Signalong Group is a charity (no 1039788) which provides resources, training and free advice, and readily works with others in the field to promote communication skills for children and adults with speech, language and communication needs.

Training is provided both directly by the charity and through its national network of registered tutors. For information about courses, or becoming a trainer, please contact Sarah on 0845 450 8424, email [sbissett@signalong.org.uk](mailto:sbissett@signalong.org.uk).

For information about Signalong resources please go to our website at [www.signalong.org.uk](http://www.signalong.org.uk) or call 0845 450 8422 to request a catalogue