



2024 Annual Report

Registered company number: 02922636 (England and Wales)
Registered Charity number: 1039788



Annual Report and Financial Statements

for the year ended 31st December 2024

The trustees who are also directors of the charity for the purposes of the Companies Act 2006, present their report with the financial statements of the charity for the year ended 31 December 2024. The trustees have adopted the provisions of Accounting and Reporting by Charities: Statement of Recommended Practice applicable to charities preparing their accounts in accordance with the Financial Reporting Standard applicable in the UK and Republic of Ireland (FRS 102) (Effective 1 January 2015).

SIGNALONG 1 Old Winery Business Park Cawston Norwich Norfolk NR10 4FE
www.signalong.org.uk

Contents

To be amended once financial report has been added

Introduction

Mission Statement

Trustees' Report

Company Information

Independent Financial Examiner's Report

Statement of Financial Activities

Balance Sheet

Notes to the Financial Statements

Reconciliation of Income and Expenditure

Reconciliation of Funds

Detailed Statement of Financial Activities

Introduction

Signalong is a sign-supported communication system designed for children and adults who have speech and language difficulties. Most users have learning disabilities or autism spectrum disorders, but the system is available to anyone who needs signing, including those with physical disabilities and learning difficulties and hearing impairment.

Increasingly, Signalong is being used with those who use alternative languages whilst they learn to communicate in English.

Signalong is based on a consistent method of analysing and presenting signs, which enables users to select vocabulary relevant to their own situations. This avoids the need to constantly update sign vocabulary by attending further classes where many of the signs taught will be redundant and quickly forgotten through lack of use.

By focusing on skills and providing a large library of over 9,000 signs, Signalong is cost-effective and represents good value for money. In addition, the Signalong methodology of handshape, orientation, placement and movement enables you to translate idiosyncratic signs in a consistent manner.

First Edition

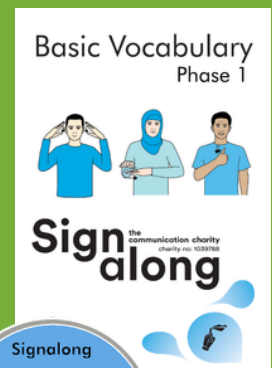


Signalong was first published in 1992 at a Kent school for children with severe learning difficulties and its founders were two teachers and a speech and language therapist. Due to its success, Signalong became a registered charitable company limited by guarantee in 1994. To date we have over 70,000 copies of Phase 1 in circulation.

The sign vocabulary is supported by diagrams, and the charity actively co-operates with expert organisations and individuals in the field of education, IT and child protection to increase the range of resources available. Its publishing activities are supported by a growing national network of registered Tutors and a free sign research and advice service for users.

Signalong provides a range of training courses including Workshops, Introductory, Foundation, Foundation Extension, Signalong Training Assistant and Tutor Training for those who wish to train others.

To promote the use of Signalong, organisations can become Signalong Friendly and we offer 3 levels of membership and currently have nearly 500 members.



Objectives and Activities

The principal activity of the charity has always been the engagement in the relief of suffering and the advancement of the education and communication skills of people with learning difficulties and speech, language and communication needs.

Mission Statement of Signalong The Communication Charity

Signalong is committed to empowering children and adults with impaired communication to understand and express their needs, choices and desires by providing vocabulary for life and learning.

Our Aims

- Greater fulfilment of potential
- Greater independence
- Reduction in disturbed and challenging behaviour
- Improvement in self-esteem
- Improved relationships

We Strive To Achieve This By:

- developing and promoting augmentative communication (manual signs, symbols, picture resources)
- researching and publishing sign vocabulary
- developing appropriate language resources for children with special needs
- providing resources to assist literacy and education
- teaching communication techniques to anyone living or working with people with impaired communication
- working with other organisations and individuals in this field
- freely offering advice to parents and professionals

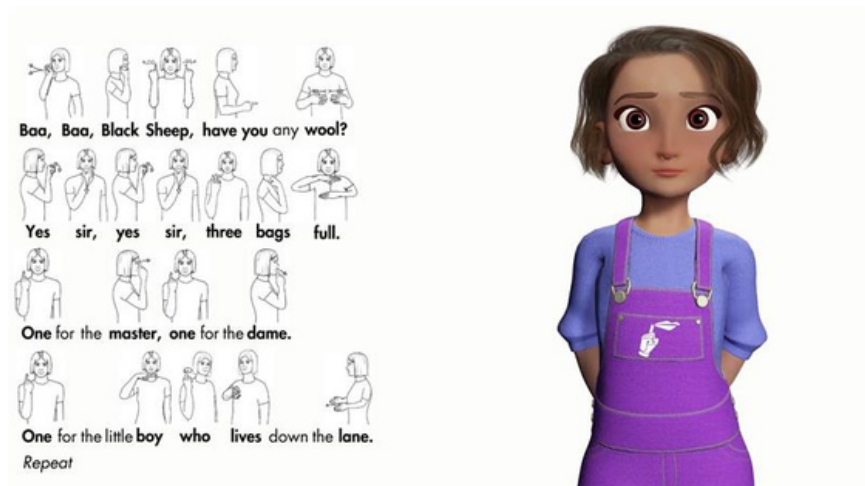
The charity is controlled by its governing document, the memorandum and articles of association and constitutes a limited company, limited by guarantee, as defined by the Companies Act 2006.

Development

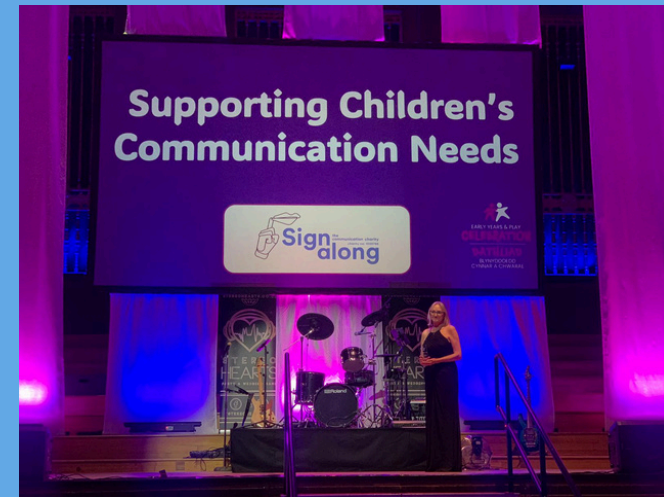
2024 saw several changes in staff and advertisement of a new position of Digital & Social Media Marketing Executive to increase brand awareness and promote the charity. This exciting new role was created to enhance our online presence, engage with a wider audience, and support the delivery of key campaigns across various digital platforms and strengthen our community engagement.

Work is now complete on the development of an avatar to support Signalong for Babies Nursery Rhymes and we launched Sami at the Norfolk Bump & Beyond in March and Baby Show in Manchester in June.

We have produced individual tracks and a compilation of the nursery rhymes available on our online shop to digitally download <https://www.shop.signalong.org.uk/babies-and-toddlers>



Signalong were delighted to attend the Celebrating Early Years awards at Swansea's Brangwyn Hall to recognise and celebrate this city's highly skilled childcare and play workforce. Our CEO presented the award for Supporting Children's Communication Needs to Highgate Nursery Uplands, Oaktree Nursery and Susan Griffiths, Childminder.



Following significant increases in daily delegate and room hire costs, we welcomed our Tutors to new venues in Worcester, Swansea, Dorset whilst retaining our Oldham venue. All were greeted with positive feedback.

Signalong collaborated with NSPCC to produce a Signalong version of PANTS to help keep children safe from abuse. Our CEO gave a short presentation and introduced the resource at the national launch online in November.

Training

Senior Tutors delivered 10 Tutor Training courses throughout the year in Northamptonshire, Swansea, Llandovery, Milton Keynes, Glasgow and Bournemouth and online resulting in additional 60 new Tutors.

Our Tutor network delivered 185 Foundation courses, 60 Introductory and 472 Workshops training over 8,305 participants. The total number of Tutors in 2024 was 472.



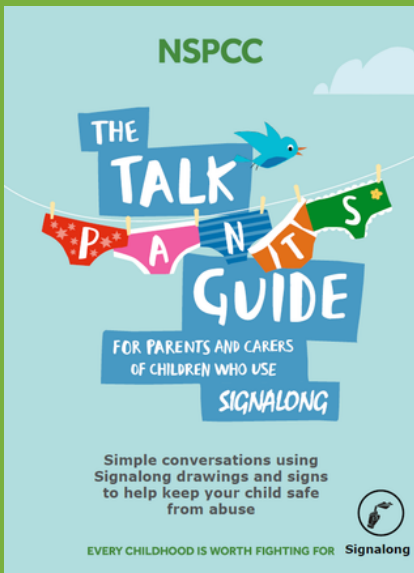
Senior Tutors

We continue to seek and appoint Senior Tutors across the UK, to deliver Tutor Training courses.

Charitable Fund

Signalong operate a charitable fund and 2.5% of our annual income is allocated to donating goods and services to those who require assistance with training fees and resources. If you or anyone you know would benefit from a charitable donation, please do not hesitate to contact us.

In 2024 Signalong donated £4,926 in manuals, posters, Sign Library subscriptions and reduced training fees.



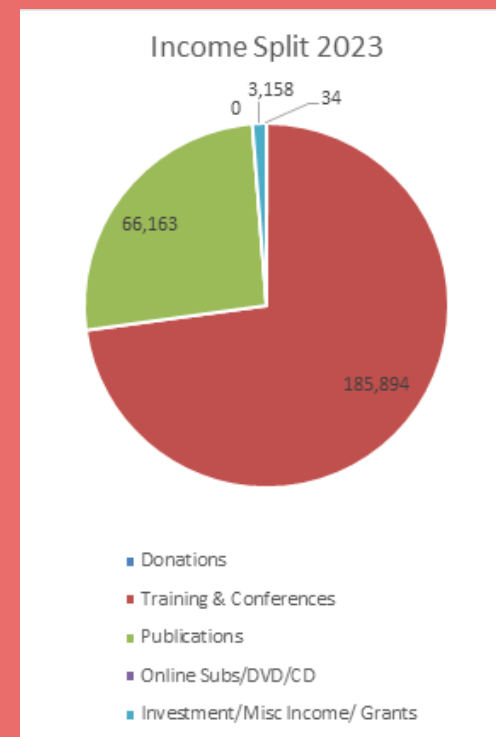
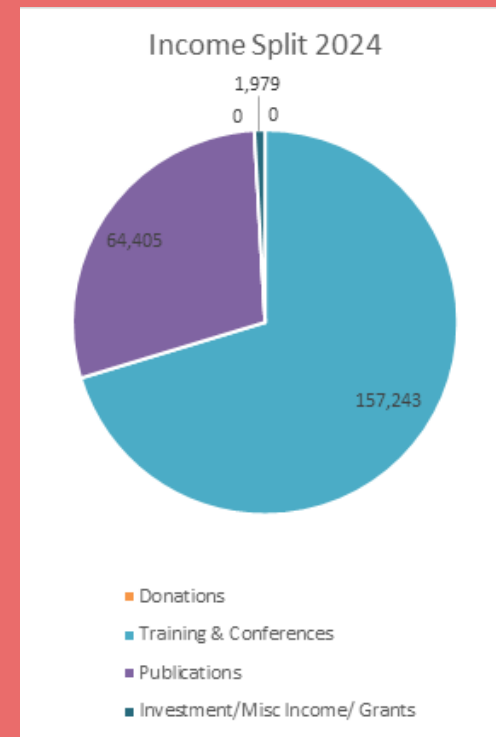
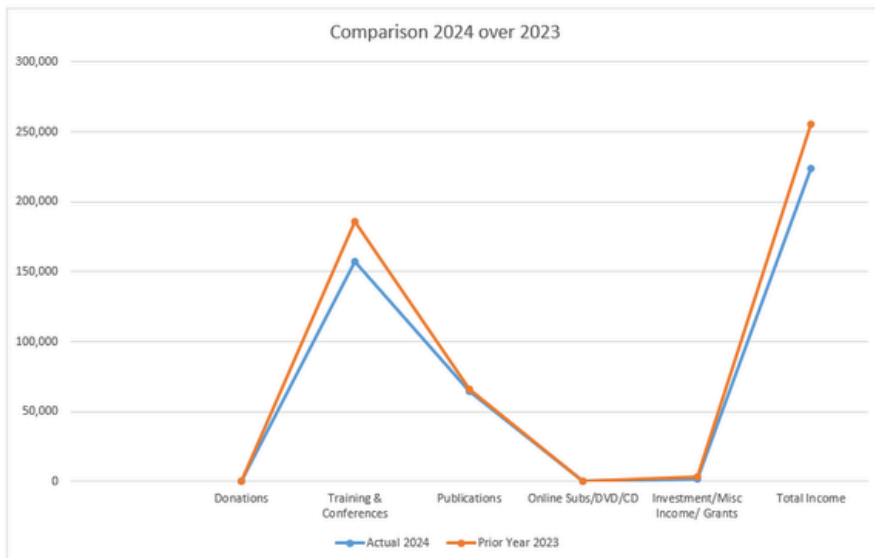
Financial

Money

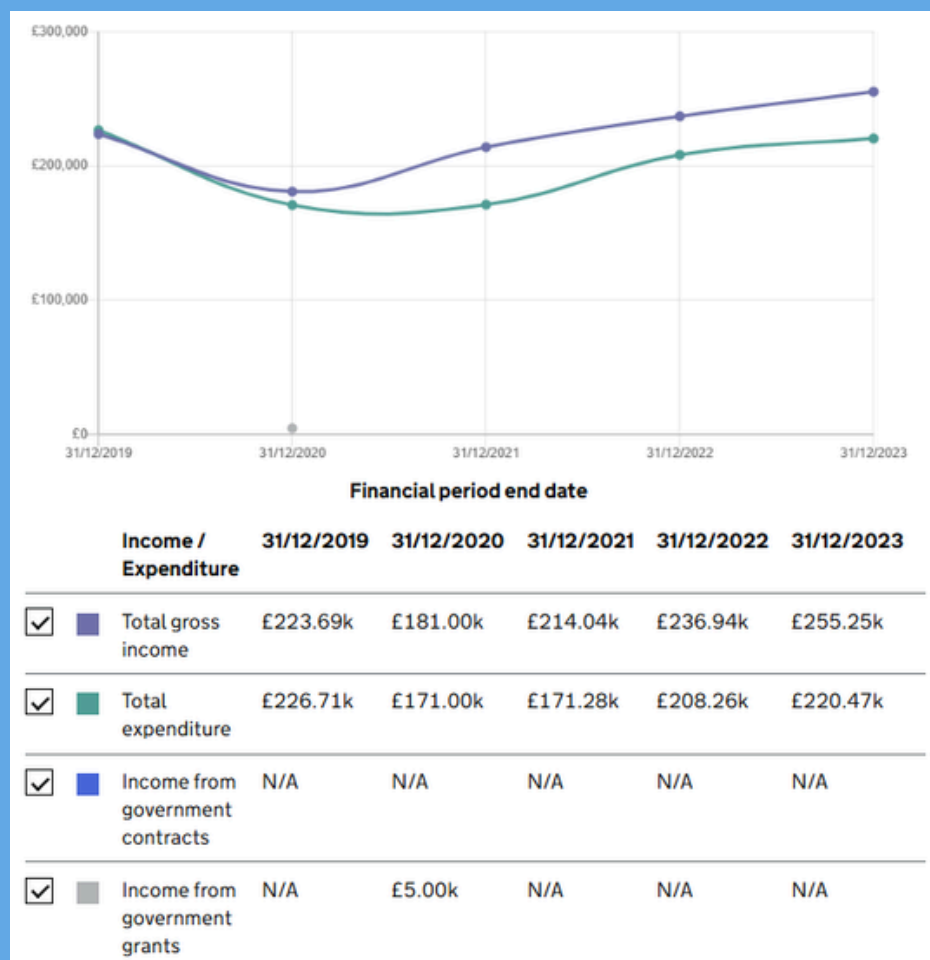


Sales of published materials decreased slightly on the previous year and we delivered less Tutor Training courses affecting our income for training and conferences. Our computer expenses increased by £5, 000 on prior year due to ongoing development of the CMS Tutor portal.

With the continuing increase in the cost of living, the board of trustees awarded staff 5% increase in salary.



Financial Overview



Investment Policy

The board of trustees decided to form an Investment Committee to invest funds, surplus to our reserve fund, using a management company. Following an audit of risk, a suitable company was identified and entrusted with our investment in several funds.

Reserves Policy

Whilst smaller organisations are less likely to hold up to 3 months reserves than larger organisations, the Trustees have considered the charity's need for reserves in line with the guidance issued by the Charity Commission. They consider that the charity should endeavor to maintain general funds of an amount approximating to three months' direct running costs, which is now £65,616. This has once again been achieved. Signalong used their income to support the running costs of the charity in 2024 and did not need to access the reserve fund.

Plans For The Future

In 2025 we will continue to raise brand awareness by using new software to analyse sales and promotions.

Freebie Friday resources will be added to the online shop so that we can track downloads. We will introduce a subscription service where users will have access to exclusive resources, discounts and content.

We will be running a Signalong Week in March to increase awareness of the charity and our following.

We aim to offer more online Introduction to Signalong Workshops to reach a new audience and increase the number of Tutor Training courses.

We continue to still aim to be the no 1 digital sign supported communication system in the UK by developing new digital resources and look to increase membership of the Sign Library.

Organisation and Governance

The charity remains reliant on its main asset, its intellectual property; the library of signs and the techniques of how they are catered to our members' needs and taught by our Tutors.

The board have, as always, been invaluable to the smooth operation of the charity. The Chairman, John Franklin, has continued to advise and provide support in IT and also to the CEO who meet regularly. Nigel Stancliffe has been instrumental in providing guidance for the investment committee and monitoring expenditure and credit control.

Michelle Songest has ensured that we follow HR policies and procedures and Andy Evans has contributed to the development of the charity from an educational perspective. We also value the input of experienced Signalong Tutors Bev McCue, Jonathan Tate and Shahnaz Ashraf.



The charity is organised so that the Board meets regularly to manage its affairs.

Board meetings have been held bi - monthly with the implementation of a Code of Conduct to the Board of Trustees to ensure that they respect and uphold the values of Signalong.

Governing Document

The charity is a charitable company limited by guarantee and was set up on the 26th April 1994. It is governed by a Memorandum and Articles of Association. This is managed on a day to day basis by a Chief Executive Officer.

Trustee Induction and Training

Advice for trustees published by the Charity Commission is given to new Board members and new guidance is notified and made available at Board meetings. Board members have free access to all members of staff to ensure that they can be fully aware of the activities and methods of the charity.

There is an identified need for further input to the Board from people outside the field of special needs, although these have proved difficult to recruit. In the event of such people being appointed to the Board, a programme of familiarisation with the charity and its work will be put into effect, and the Charity Commission advice will be given to them.

Organisation

The charity is an Association of Members, the business of which is governed by the Board who may exercise all powers of the Association. The Board of Trustees consists of no less than three and no more than ten members and is responsible for ultimate strategic decisions, having regard to advice from the senior management of the charity. The members of the Board are set out in the section of this report entitled "Directors".

Membership of the charity is by subscription, and all registered Signalong Tutors are automatically enrolled. Current membership stands at 472.

SIGNALONG THE COMMUNICATION CHARITY

REPORT OF THE TRUSTEES
FOR THE YEAR ENDED 31ST DECEMBER 2024

REFERENCE AND ADMINISTRATIVE DETAILS

Registered Company number

02922636 (England and Wales)

Registered Charity number

1039788

Registered office

1 Old Winery Business Park
Cawston
Norwich
Norfolk
NR10 4FE

Trustees

A Evans
J Franklin (Chair)
M Songest
B McCue
N Stancliffe
J Tate
S Ashraf

Company Secretary

T Goode

Independent Examiner

Mr L Clifton
FCCA
Stephen Hill Partnership Limited
139-141 Watling Street
Gillingham
Kent
ME7 2YY

SIGNALONG THE COMMUNICATION CHARITY

REPORT OF THE TRUSTEES
FOR THE YEAR ENDED 31ST DECEMBER 2024

REFERENCE AND ADMINISTRATIVE DETAILS

Bankers

CAF Bank Limited
25 Kings Hill Avenue
West Malling
Kent

This report has been prepared in accordance with the special provisions of Part 15 of the Companies Act 2006 relating to small companies.

Report of the trustees, incorporating a strategic report, approved by order of the board of trustees, as the company directors, on and signed on the board's behalf by:



.....

T Goode - Secretary

INDEPENDENT EXAMINER'S REPORT TO THE TRUSTEES OF
SIGNALONG THE COMMUNICATION CHARITY

Independent examiner's report to the trustees of Signalong The Communication Charity ('the Company')

I report to the charity trustees on my examination of the accounts of the Company for the year ended 31st December 2024.

Responsibilities and basis of report

As the charity's trustees of the Company (and also its directors for the purposes of company law) you are responsible for the preparation of the accounts in accordance with the requirements of the Companies Act 2006 ('the 2006 Act').

Having satisfied myself that the accounts of the Company are not required to be audited under Part 16 of the 2006 Act and are eligible for independent examination, I report in respect of my examination of your charity's accounts as carried out under Section 145 of the Charities Act 2011 ('the 2011 Act'). In carrying out my examination I have followed the Directions given by the Charity Commission under Section 145(5) (b) of the 2011 Act.

Independent examiner's statement

I have completed my examination. I confirm that no matters have come to my attention in connection with the examination giving me cause to believe:

1. accounting records were not kept in respect of the Company as required by Section 386 of the 2006 Act; or
2. the accounts do not accord with those records; or
3. the accounts do not comply with the accounting requirements of Section 396 of the 2006 Act other than any requirement that the accounts give a true and fair view which is not a matter considered as part of an independent examination; or
4. the accounts have not been prepared in accordance with the methods and principles of the Statement of Recommended Practice for accounting and reporting by charities (applicable to charities preparing their accounts in accordance with the Financial Reporting Standard applicable in the UK and Republic of Ireland (FRS 102)).

I have no concerns and have come across no other matters in connection with the examination to which attention should be drawn in this report in order to enable a proper understanding of the accounts to be reached.



Mr L Clifton
FCCA
Stephen Hill Partnership Limited
139-141 Watling Street
Gillingham
Kent
ME7 2YY

Date: 15 July 2025

SIGNALONG THE COMMUNICATION CHARITY

STATEMENT OF FINANCIAL ACTIVITIES
FOR THE YEAR ENDED 31ST DECEMBER 2024

	Notes	Unrestricted funds £	Restricted fund £	31.12.24 Total funds £	31.12.23 Total funds £
INCOME AND ENDOWMENTS FROM					
Donations and legacies		-	-	-	34
Other trading activities	2	221,648	-	221,648	252,057
Investment income	3	<u>1,979</u>	<u>-</u>	<u>1,979</u>	<u>3,158</u>
Total		<u>223,627</u>	<u>-</u>	<u>223,627</u>	<u>255,249</u>
EXPENDITURE ON					
Raising funds		50,827	-	50,827	39,887
Charitable activities					
Charitable activities		189,372	-	189,372	177,905
Governance costs		<u>2,544</u>	<u>-</u>	<u>2,544</u>	<u>2,680</u>
Total		<u>242,743</u>	<u>-</u>	<u>242,743</u>	<u>220,472</u>
Net gains on investments		<u>15,766</u>	<u>-</u>	<u>15,766</u>	<u>9,529</u>
NET INCOME/(EXPENDITURE)		(3,350)	-	(3,350)	44,306
RECONCILIATION OF FUNDS					
Total funds brought forward		<u>246,576</u>	<u>-</u>	<u>246,576</u>	<u>202,270</u>
TOTAL FUNDS CARRIED FORWARD		<u>243,226</u>	<u>-</u>	<u>243,226</u>	<u>246,576</u>

SIGNALONG THE COMMUNICATION CHARITY

BALANCE SHEET
31ST DECEMBER 2024

	Notes	Unrestricted funds £	Restricted fund £	31.12.24 Total funds £	31.12.23 Total funds £
FIXED ASSETS					
Intangible assets	8	12,174	-	12,174	17,257
Tangible assets	9	6,513	-	6,513	2,766
Investments	10	<u>156,295</u>	<u>-</u>	<u>156,295</u>	<u>140,529</u>
		174,982	-	174,982	160,552
CURRENT ASSETS					
Stocks	11	7,760	-	7,760	13,547
Debtors	12	11,993	-	11,993	20,294
Cash at bank and in hand		<u>77,127</u>	<u>-</u>	<u>77,127</u>	<u>90,648</u>
		96,880	-	96,880	124,489
CREDITORS					
Amounts falling due within one year	13	<u>(28,636)</u>	<u>-</u>	<u>(28,636)</u>	<u>(38,465)</u>
NET CURRENT ASSETS					
		<u>68,244</u>	<u>-</u>	<u>68,244</u>	<u>86,024</u>
TOTAL ASSETS LESS CURRENT LIABILITIES					
		<u>243,226</u>	<u>-</u>	<u>243,226</u>	<u>246,576</u>
NET ASSETS					
		<u>243,226</u>	<u>-</u>	<u>243,226</u>	<u>246,576</u>
FUNDS					
Unrestricted funds	14			<u>243,226</u>	<u>246,576</u>
TOTAL FUNDS					
				<u>243,226</u>	<u>246,576</u>

The charitable company is entitled to exemption from audit under Section 477 of the Companies Act 2006 for the year ended 31st December 2024.

The members have not required the company to obtain an audit of its financial statements for the year ended 31st December 2024 in accordance with Section 476 of the Companies Act 2006.

The trustees acknowledge their responsibilities for

- (a) ensuring that the charitable company keeps accounting records that comply with Sections 386 and 387 of the Companies Act 2006 and
- (b) preparing financial statements which give a true and fair view of the state of affairs of the charitable company as at the end of each financial year and of its surplus or deficit for each financial year in accordance with the requirements of Sections 394 and 395 and which otherwise comply with the requirements of the Companies Act 2006 relating to financial statements, so far as applicable to the charitable company.

The notes form part of these financial statements

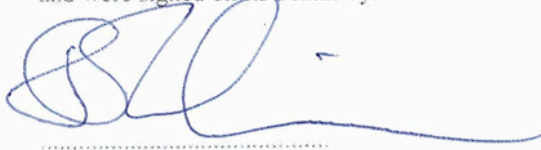
continued...

SIGNALONG THE COMMUNICATION CHARITY

BALANCE SHEET - continued
31ST DECEMBER 2024

These financial statements have been prepared in accordance with the provisions applicable to charitable companies subject to the small companies regime.

The financial statements were approved by the Board of Trustees and authorised for issue on
and were signed on its behalf by:



.....
J Franklin (Chair) - Trustee

The notes form part of these financial statements

SIGNALONG THE COMMUNICATION CHARITY

NOTES TO THE FINANCIAL STATEMENTS FOR THE YEAR ENDED 31ST DECEMBER 2024

1. ACCOUNTING POLICIES

Basis of preparing the financial statements

The financial statements of the charitable company, which is a public benefit entity under FRS 102, have been prepared in accordance with the Charities SORP (FRS 102) 'Accounting and Reporting by Charities: Statement of Recommended Practice applicable to charities preparing their accounts in accordance with the Financial Reporting Standard applicable in the UK and Republic of Ireland (FRS 102) (effective 1 January 2019)', Financial Reporting Standard 102 'The Financial Reporting Standard applicable in the UK and Republic of Ireland' and the Companies Act 2006. The financial statements have been prepared under the historical cost convention, with the exception of investments which are included at market value, as modified by the revaluation of certain assets.

Financial reporting standard 102 - reduced disclosure exemptions

The charitable company has taken advantage of the following disclosure exemption in preparing these financial statements, as permitted by FRS 102 'The Financial Reporting Standard applicable in the UK and Republic of Ireland':

- the requirements of Section 7 Statement of Cash Flows.

Income

All income is recognised in the Statement of Financial Activities once the charity has entitlement to the funds, it is probable that the income will be received and the amount can be measured reliably.

Turnover is the amount derived from the provision of goods and services and is stated after trade discounts, other sales taxes and net of VAT.

Expenditure

Liabilities are recognised as expenditure as soon as there is a legal or constructive obligation committing the charity to that expenditure, it is probable that a transfer of economic benefits will be required in settlement and the amount of the obligation can be measured reliably. Expenditure is accounted for on an accruals basis and has been classified under headings that aggregate all cost related to the category. Where costs cannot be directly attributed to particular headings they have been allocated to activities on a basis consistent with the use of resources.

Support costs

Support costs are those functions that assist the work of the charity but do not directly undertake charitable activities. Support costs include back office costs, finance, personnel, payroll and governance costs which are those incurred in connection with administration of the charity and compliance with constitutional and statutory requirements.

Allocation and apportionment of costs

Expenditure is classified under the appropriate activity headings.

Costs of raising funds is comprised of a 2% apportionment on total staff, administrative and office costs.

Other trading activities expenditure includes the costs related to the development, publication and sale of books, manuals and resource packs, as well as the costs for training courses and conferences.

Expenditure on charitable activities includes the staff, administrative and office costs associated with activities undertaken to further the purposes of the charity.

Support costs includes a 4% apportionment on total staff costs.

Development costs

Development costs, being the amounts paid to third parties in relation to book development, is being amortised evenly over its estimated useful life of ten years.

continued...

SIGNALONG THE COMMUNICATION CHARITY

NOTES TO THE FINANCIAL STATEMENTS - continued
FOR THE YEAR ENDED 31ST DECEMBER 2024

1. ACCOUNTING POLICIES - continued

Computer software

Computer software, being the amounts paid to third parties in relation to website development, is being amortised evenly over its estimated useful life of five years.

Tangible fixed assets

Depreciation is provided at the following annual rates in order to write off each asset over its estimated useful life.

Fixtures and fittings	- 25% on reducing balance
Computer equipment	- 20% on cost

Stocks

Stocks are valued at the lower of cost and net realisable value, after making due allowance for obsolete and slow moving items.

Taxation

The charity is exempt from corporation tax on its charitable activities.

Fund accounting

Unrestricted funds can be used in accordance with the charitable objectives at the discretion of the trustees.

Restricted funds can only be used for particular restricted purposes within the objects of the charity. Restrictions arise when specified by the donor or when funds are raised for particular restricted purposes.

Further explanation of the nature and purpose of each fund is included in the notes to the financial statements.

Research and development

Expenditure on research and development is written off in the year in which it is incurred.

Leasing commitments

Rentals payable under operating leases are charged against income on a straight line basis over the lease term.

Company status

The company is a company limited by guarantee, incorporated in England and Wales. The members of the company are the trustees. In the event of the charity being wound up the liability in respect of the guarantee is limited to £1 per member of the charity.

Deferred income

The charity provides training and course materials. Where receipts are made in advance of the course and materials being provided the income is deferred until such has been realised.

2. OTHER TRADING ACTIVITIES

	31.12.24	31.12.23
	£	£
Training and conferences	157,243	185,894
Sale of publications	<u>64,405</u>	<u>66,163</u>
	<u>221,648</u>	<u>252,057</u>

continued...

SIGNALONG THE COMMUNICATION CHARITY

NOTES TO THE FINANCIAL STATEMENTS - continued
FOR THE YEAR ENDED 31ST DECEMBER 2024

3. INVESTMENT INCOME

	31.12.24	31.12.23
	£	£
Investment income	<u>1,979</u>	<u>3,158</u>

4. NET INCOME/(EXPENDITURE)

Net income/(expenditure) is stated after charging/(crediting):

	31.12.24	31.12.23
	£	£
Depreciation - owned assets	3,347	1,176
Hire of plant and machinery	1,552	2,797
Development costs amortisation	<u>5,083</u>	<u>5,060</u>

5. TRUSTEES' REMUNERATION AND BENEFITS

There were no trustees' remuneration or other benefits for the year ended 31st December 2024 nor for the year ended 31st December 2023.

Trustees' expenses

There were no trustees' expenses paid for the year ended 31st December 2024 nor for the year ended 31st December 2023.

6. STAFF COSTS

The average monthly number of employees during the year was as follows:

	31.12.24	31.12.23
Average number of employees	<u>5</u>	<u>5</u>

No employees received emoluments in excess of £60,000.

No employees received £60,000 per annum or more.

7. COMPARATIVES FOR THE STATEMENT OF FINANCIAL ACTIVITIES

	Unrestricted funds £	Restricted fund £	Total funds £
INCOME AND ENDOWMENTS FROM			
Donations and legacies	34	-	34
Other trading activities	252,057	-	252,057
Investment income	<u>3,158</u>	-	<u>3,158</u>
Total	<u>255,249</u>	-	<u>255,249</u>
EXPENDITURE ON			
Raising funds	39,887	-	39,887
Charitable activities			
Charitable activities	177,905	-	177,905
Governance costs	2,680	-	2,680

continued...

SIGNALONG THE COMMUNICATION CHARITY

NOTES TO THE FINANCIAL STATEMENTS - continued
FOR THE YEAR ENDED 31ST DECEMBER 2024

7. COMPARATIVES FOR THE STATEMENT OF FINANCIAL ACTIVITIES - continued	Unrestricted funds £	Restricted fund £	Total funds £
Total	<u>220,472</u>	<u>-</u>	<u>220,472</u>
Net gains on investments	<u>9,529</u>	<u>-</u>	<u>9,529</u>
NET INCOME	44,306	-	44,306
RECONCILIATION OF FUNDS			
Total funds brought forward	<u>202,270</u>	<u>-</u>	<u>202,270</u>
TOTAL FUNDS CARRIED FORWARD	<u>246,576</u>	<u>-</u>	<u>246,576</u>
8. INTANGIBLE FIXED ASSETS	Development costs £	Computer software £	Totals £
COST			
At 1st January 2024 and 31st December 2024	<u>50,831</u>	<u>3,000</u>	<u>53,831</u>
AMORTISATION			
At 1st January 2024	33,574	3,000	36,574
Charge for year	<u>5,083</u>	<u>-</u>	<u>5,083</u>
At 31st December 2024	<u>38,657</u>	<u>3,000</u>	<u>41,657</u>
NET BOOK VALUE			
At 31st December 2024	<u>12,174</u>	<u>-</u>	<u>12,174</u>
At 31st December 2023	<u>17,257</u>	<u>-</u>	<u>17,257</u>

continued...

SIGNALONG THE COMMUNICATION CHARITY
NOTES TO THE FINANCIAL STATEMENTS - continued
FOR THE YEAR ENDED 31ST DECEMBER 2024

9. TANGIBLE FIXED ASSETS

	Fixtures and fittings £	Computer equipment £	Totals £
COST			
At 1st January 2024	3,224	8,671	11,895
Additions	<u>-</u>	<u>7,094</u>	<u>7,094</u>
At 31st December 2024	<u>3,224</u>	<u>15,765</u>	<u>18,989</u>
DEPRECIATION			
At 1st January 2024	2,448	6,681	9,129
Charge for year	<u>194</u>	<u>3,153</u>	<u>3,347</u>
At 31st December 2024	<u>2,642</u>	<u>9,834</u>	<u>12,476</u>
NET BOOK VALUE			
At 31st December 2024	<u>582</u>	<u>5,931</u>	<u>6,513</u>
At 31st December 2023	<u>776</u>	<u>1,990</u>	<u>2,766</u>

10. FIXED ASSET INVESTMENTS

	Unlisted investments £
MARKET VALUE	
At 1st January 2024	140,529
Revaluations	<u>15,766</u>
At 31st December 2024	<u>156,295</u>
NET BOOK VALUE	
At 31st December 2024	<u>156,295</u>
At 31st December 2023	<u>140,529</u>

There were no investment assets outside the UK.

Cost or valuation at 31st December 2024 is represented by:

	Unlisted investments £
Valuation in 2023	9,529
Valuation in 2024	15,766
Cost	<u>131,000</u>
	<u>156,295</u>

If had not been revalued would have been included at the following historical cost:

	31.12.24 £	31.12.23 £
Cost	<u>131,000</u>	<u>131,000</u>

continued...

SIGNALONG THE COMMUNICATION CHARITY

NOTES TO THE FINANCIAL STATEMENTS - continued
FOR THE YEAR ENDED 31ST DECEMBER 2024

11. STOCKS

	2024	2023
	£	£
Paper and packaging	1,890	2,565
Books and resource packs	5,870	10,982
	<u>7,760</u>	<u>13,547</u>

12. DEBTORS: AMOUNTS FALLING DUE WITHIN ONE YEAR

	31.12.24	31.12.23
	£	£
Trade debtors	8,744	16,328
Prepayments and accrued income	<u>3,249</u>	<u>3,966</u>
	<u>11,993</u>	<u>20,294</u>

13. CREDITORS: AMOUNTS FALLING DUE WITHIN ONE YEAR

	31.12.24	31.12.23
	£	£
Trade creditors	167	1,412
Social security and other taxes	7,443	9,084
Accruals and deferred income	<u>21,026</u>	<u>27,969</u>
	<u>28,636</u>	<u>38,465</u>

Deferred income for the year ended 31 December 2024 amounted to £20,025 (2023 £26,969). This relates to tutor registration fees invoiced in advance for the next year.

14. MOVEMENT IN FUNDS

	At 1.1.24	Net movement in funds	At 31.12.24
	£	£	£
Unrestricted funds			
Unrestricted Funds	246,576	(3,350)	243,226
	<u>246,576</u>	<u>(3,350)</u>	<u>243,226</u>

Net movement in funds, included in the above are as follows:

	Incoming resources	Resources expended	Gains and losses	Movement in funds
	£	£	£	£
Unrestricted funds				
Unrestricted Funds	223,627	(242,743)	15,766	(3,350)
	<u>223,627</u>	<u>(242,743)</u>	<u>15,766</u>	<u>(3,350)</u>

continued...

SIGNALONG THE COMMUNICATION CHARITY

NOTES TO THE FINANCIAL STATEMENTS - continued
FOR THE YEAR ENDED 31ST DECEMBER 2024

14. MOVEMENT IN FUNDS - continued

Comparatives for movement in funds

	At 1.1.23 £	Net movement in funds £	At 31.12.23 £
Unrestricted funds			
Unrestricted Funds	202,270	44,306	246,576
	<u> </u>	<u> </u>	<u> </u>
TOTAL FUNDS	<u>202,270</u>	<u>44,306</u>	<u>246,576</u>

Comparative net movement in funds, included in the above are as follows:

	Incoming resources £	Resources expended £	Gains and losses £	Movement in funds £
Unrestricted funds				
Unrestricted Funds	255,249	(220,472)	9,529	44,306
	<u> </u>	<u> </u>	<u> </u>	<u> </u>
TOTAL FUNDS	<u>255,249</u>	<u>(220,472)</u>	<u>9,529</u>	<u>44,306</u>

A current year 12 months and prior year 12 months combined position is as follows:

	At 1.1.23 £	Net movement in funds £	At 31.12.24 £
Unrestricted funds			
Unrestricted Funds	202,270	40,956	243,226
	<u> </u>	<u> </u>	<u> </u>
TOTAL FUNDS	<u>202,270</u>	<u>40,956</u>	<u>243,226</u>

A current year 12 months and prior year 12 months combined net movement in funds, included in the above are as follows:

	Incoming resources £	Resources expended £	Gains and losses £	Movement in funds £
Unrestricted funds				
Unrestricted Funds	478,876	(463,215)	25,295	40,956
	<u> </u>	<u> </u>	<u> </u>	<u> </u>
TOTAL FUNDS	<u>478,876</u>	<u>(463,215)</u>	<u>25,295</u>	<u>40,956</u>

continued...

SIGNALONG THE COMMUNICATION CHARITY

NOTES TO THE FINANCIAL STATEMENTS - continued
FOR THE YEAR ENDED 31ST DECEMBER 2024

15. RELATED PARTY DISCLOSURES

There were no related party transactions for the year ended 31st December 2024.

SIGNALONG THE COMMUNICATION CHARITY

DETAILED STATEMENT OF FINANCIAL ACTIVITIES
FOR THE YEAR ENDED 31ST DECEMBER 2024

	31.12.24	31.12.23
	£	£
INCOME AND ENDOWMENTS		
Donations and legacies		
Donations	-	34
Other trading activities		
Training and conferences	157,243	185,894
Sale of publications	<u>64,405</u>	<u>66,163</u>
	221,648	252,057
Investment income		
Investment income	<u>1,979</u>	<u>3,158</u>
Total incoming resources	223,627	255,249
EXPENDITURE		
Raising donations and legacies		
Staff costs	3,283	2,978
Telephone	10	9
Postage and stationery	92	88
Computer costs	329	223
Computer equipment	<u>63</u>	<u>18</u>
	3,777	3,316
Other trading activities		
Books	2,765	3,490
Training and conference costs	18,015	14,780
Repairs and renewals	4,500	1,474
Computer expenses	16,108	11,192
Subscriptions	579	575
Development costs	<u>5,083</u>	<u>5,060</u>
	47,050	36,571
Charitable activities		
Staff costs	155,857	145,930
Rental of photocopier	1,552	2,797
Rent and rates	14,558	14,156
Insurance	1,658	1,521
Light and heat	1,069	755
Telephone	559	470
Postage and stationery	4,496	4,320
Advertising	2,738	4,660
Sundries	2,212	801
Bad debts	-	63
Training costs	307	258
Carried forward	185,007	175,731

This page does not form part of the statutory financial statements

SIGNALONG THE COMMUNICATION CHARITY

DETAILED STATEMENT OF FINANCIAL ACTIVITIES
FOR THE YEAR ENDED 31ST DECEMBER 2024

	31.12.24	31.12.23
	£	£
Charitable activities		
Brought forward	185,006	175,731
Fixtures and fittings	194	258
Computer equipment	3,090	900
Bank interest	<u>1,082</u>	<u>1,016</u>
	189,372	177,905
Support costs		
Governance costs		
Accountancy fees	1,194	1,111
Legal and professional fees	<u>1,350</u>	<u>1,569</u>
	<u>2,544</u>	<u>2,680</u>
Total resources expended	<u>242,743</u>	<u>220,472</u>
Net (expenditure)/income before gains and losses	(19,116)	34,777
Realised recognised gains and losses		
Realised gains/(losses) on fixed asset investments	<u>15,766</u>	<u>9,529</u>
Net (expenditure)/income	<u>(3,350)</u>	<u>44,306</u>

This page does not form part of the statutory financial statements